

DATASHEET

Compact Fiber Dome Aerial 3 – 6,5mm

Article number: 29020

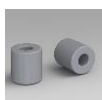


Product description

The Compact Fiber Dome – Aerial is used to connect, repair or extend the fiber to the home subscriber drop cable for aerial and direct buried applications.

Suitable for 1 cable in and 1 cable out up to max 2 optical fibers. R = 22,5mm.

Cable diameters: Ø 3mm – Ø 6,5mm



Grey rubber: Ø 3mm – Ø 5mm



Black rubber: Ø 5mm – Ø 6,5mm

Splice tray capacity:

2 splice protectors ANT/mini heatshrink or

2 splice protectors heatshrink Ø 2,4 mm x 45 mm.

Features and Benefit

- Easy to install
- Universal applicable
- Suitable for splice protectors ANT, miniheatshrink or heatshrink Ø2,4mm x 45mm
- Orderly assembly sequence
- Integrated cable retention
- Box dimensions 590 x 390 x 200mm
- Ingress protection IP68
- Impact resistant
- Halogen-free
- Increased UV-resistant



Article number

29020: Compact Fiber Dome Aerial 3 – 6,5mm

Packaging

Compact fiber domes per cardboard: 25 pcs
EAN-number: 8712259335230
Cardboard dimensions: 590 x 390 x 200 mm
Each Compact Fiber Dome is packed in a transparent sealed bag.

All products suitably packed in recyclable materials and clearly labelled with Attema article number and description.

Physical characteristics

Color: Black
Material: Polypropylene Fiberglass (Master Batch UV)
Diameter closure Ø85mm
Length closure 155mm
Weight: 0,165 kg
Cable diameters: Ø 3mm – Ø 6,5mm
Number of cable ports: 2 (1 in / 1 out)
Number of fibers: 2
Splice tray capacity: 2 splice protectors ANT/mini heatshrink or
2 splice protectors heatshrink Ø 2,4 mm x 45 mm.

Fiber bending radius: R = 22,5mm
Looping length of fibers: 23 cm

Technical characteristics

Cable retention: >150N

Cable torsion: 90 degrees, 400mm
No degradation, no leakage.

Impact: IK09
No degradation, no leakage.

Crush resistance: 1000N and,
Copes with the load mentioned in EN124 classification B125 under the following conditions:
- Sandcoverage at least 30cm
- Fiber repair dome is embedded in sand

Water immersion: IP68, EN 60529
Water depth 1 meter, 7 days, no leakage

Chemical Resistance: 5%HCL, 5%NaOH, 5%NaCl
Kerosene (lamp oil), petroleum jelly,
diesel for cars EN590.
24 hours, no leakage

Vibration: 10 Hz, Amplitude 3mm, during 10 days,
No failure

After opening the foam O-ring can be used again, if no damage is noticeable.

END OF DATASHEET

www.attema.com